



JAPAN LEADING EDGE FOUNDATION

General incorporated foundation

Vision

Realization of asymbiotic society

By promoting decent work by improving the working environment for foreign workers, we will create a win-win relationship for foreigners working with companies and realize a symbiotic society between Japanese and foreigners. By doing so, we aim to further develop Japan, where the birthrate is declining and the population is aging, and to aim to be a country which foreigners can feel "I am glad I came to Japan and I am glad I worked in Japan."



Supporting foreigners who want to be active in Japan

prologue

Come to like about Japan. Connect to a future full of hope.

Currently in Japan, which has become an aging society in recent years, the working population of young people has decreased, and a shortage of human resources has been apparent in various industries such as an construction industry and a nursing care industry.

While Japan needs a large number of workers, foreigners residing in Japan with a status of residence of "training" or "technical intern training" since 1993 can conduct training or technical intern training with compensation. The "Ginou Jishu seido (a system of technical intern training)" has been started, and young human resources from other countries, mainly in Asia, have worked in Japan to support Japan's production.

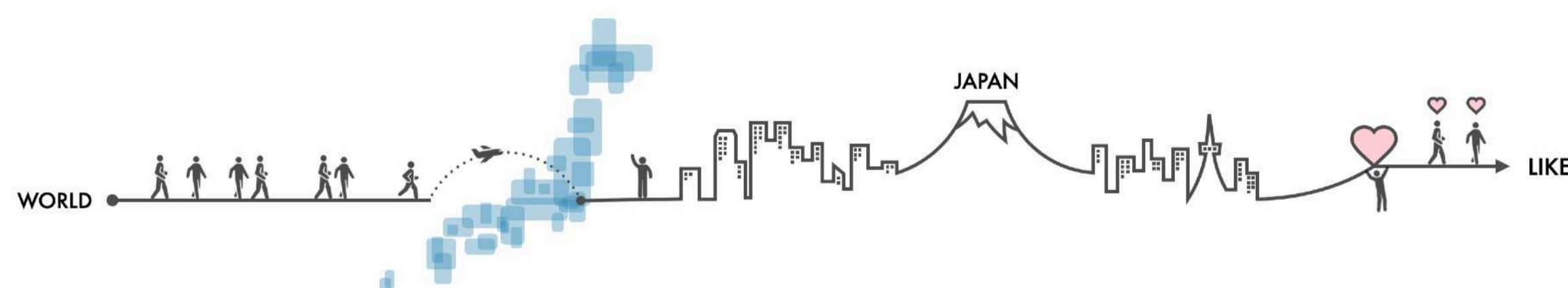
On the other hand, as human rights issues have been pointed out in the international community, there are many foreign workers who are forced into a harsh working environment at some companies. And in April 2019, "Tokuteiginou (Specific Skills)" was established as a new foreign worker policy. In that environment

In that environment, the "Japan Leading Edge Foundation" (JLEF Foundation) has been established with the aim of building a society that can produce human resources who can play an active role in the world. Also, JLEF Foundation supports foreign worker who came to Japan saying "I like Japan" and "I want to come to Japan" and They do Not say "I hate Japan". We will support technical intern trainees and foreigners with specific skills from other countries to prevent them from returning to Japan. JLEF Foundation contributes to mutual understanding and international goodwill with foreigners, and supports foreign workers to utilize the technical intern training system and the specified skill system.



Mission

JLEF Mission

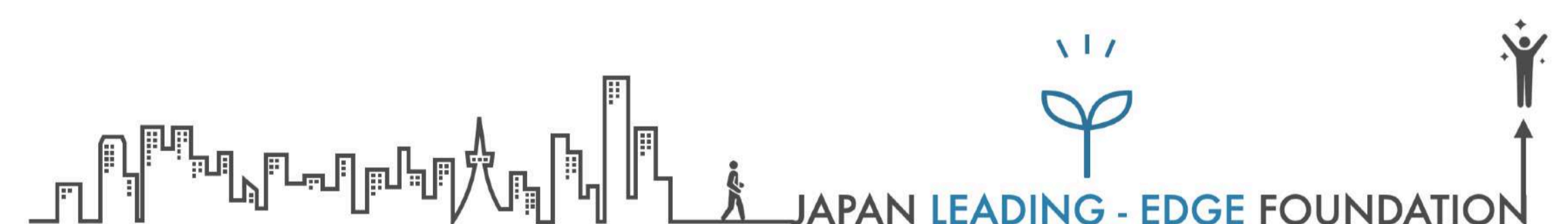


Realization of a symbiotic society

By promoting decent work by improving the working environment for foreign workers, we will create a win-win relationship for foreigners working with companies and realize a symbiotic society between Japanese and foreigners. By doing so, we aim to further develop Japan, where the birthrate is declining and the population is aging, and to aim to be a country which foreigners can feel "I am glad I came to Japan and I am glad I worked in Japan."

Vision

JLEF Vision



Building a JLEF network

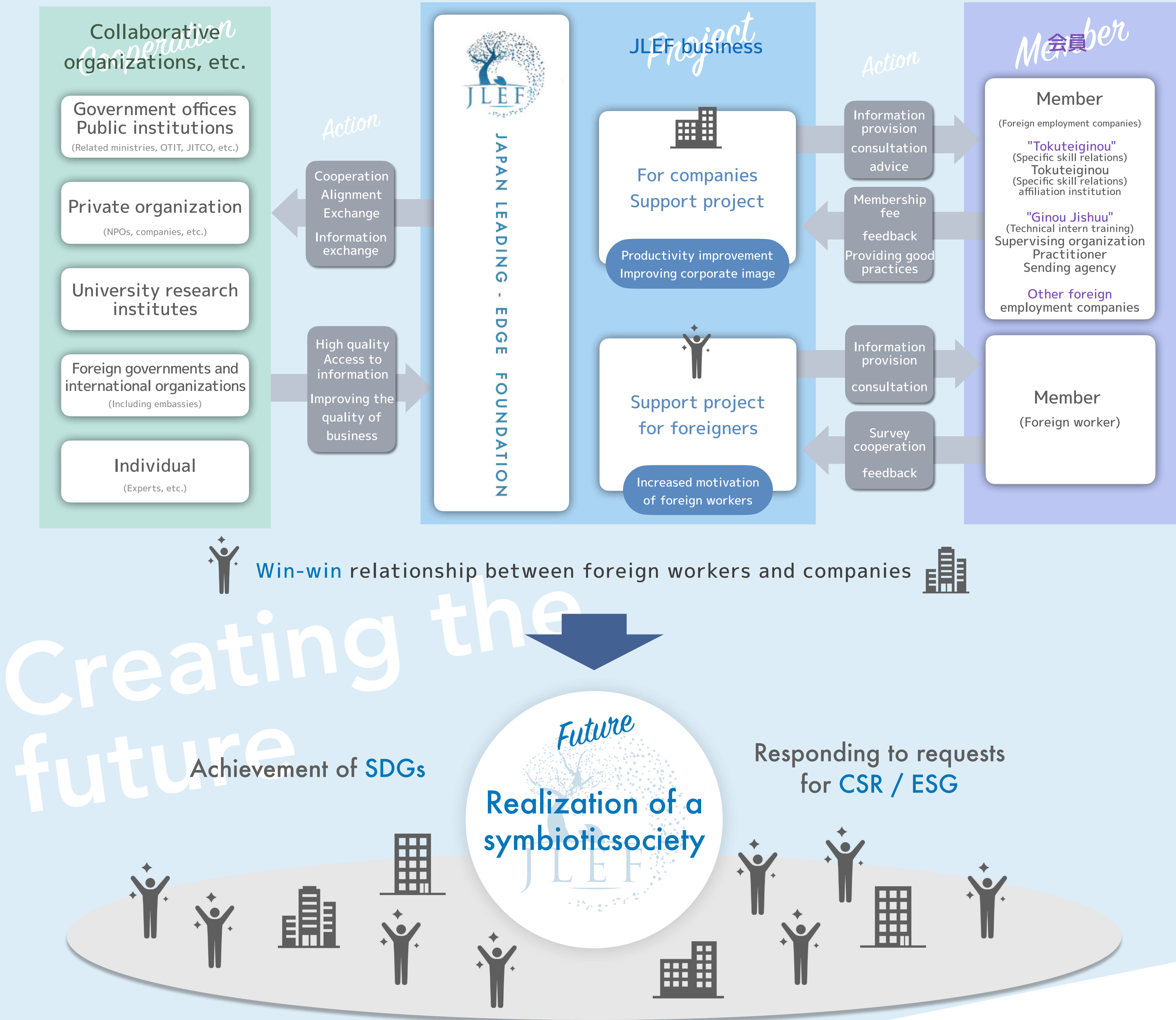
Bringing a win-win relationship organically to both sides by comprehensively and integrally providing counseling and advice on living and work counseling support for foreign workers and environment improvement for employment of foreigners for companies.

* Decent work is a rewarding and human-like work.

* The United Nations SDGs (Sustainable Development Goals) are the eighth goal to be achieved by 2030: "Sustainable, inclusive and sustainable economic growth for all, and it is said that it will promote decent work."

➤ **What JLEF is aiming for**

Foreigners by providing information and consultation to foreign employment companies and foreign workers who are members of JLEF, collecting and accumulating feedback, delivering the voices of companies and foreigners to each related ministry and agency, and asking for cooperation. We aim to build a win-win relationship between workers and businesses.



➤ **JLEF's main business**

1. A business that builds a network between foreign "Ginou Jishuusei" (technical intern trainees) and other foreign workers who provide labor in Japan, and manages and operates the network.
2. A business that investigates and researches services that foreign workers are looking for in living in Japan.
3. Investigation of working conditions of foreign workers, presence or absence of intermediate exploitation, and other problems surrounding the working environment
4. Advice on various problems that foreign workers have in living in Japan, and other comprehensive consulting business to improve the convenience of their lives.
5. A business in which foreign workers provide assistance and advice when disseminating the economic and social conditions of Japan to the international community.
6. Business that assists various claims made to Japan, local public organizations and companies when foreign workers return to Japan or after returning to Japan.
7. Various consultant businesses for those who live overseas and wish to visit Japan

Representative Director **Shinjiro Koyama**



Representative lawyer of Ichigaya Law Office (current position)
Problems related to real estate, problems related to the Companies Act such as corporate control rights, problems related to intellectual property rights such as trademark rights, problems related to the Financial Instruments and Exchange Law, various corporations such as religious corporations and school corporations In addition to handling a wide range of civil cases such as legal affairs, domestic affairs such as divorce and inheritance issues, and labor issues, he has resolved numerous bankruptcy cases as a bankruptcy trustee.

Director

Akira Isawa

Joined the Ministry of Labor (currently the Ministry of Health, Labor and Welfare) in 1980. In 2001, he was a counselor of the Cabinet Secretariat (assistant to the Deputy Chief Cabinet Secretary), a director of the Labor Standards Bureau Supervision Division in 2002 at the Ministry of Health, Labor and Welfare, a counselor in charge of labor-management relations in 2003, and a deputy director general in charge of the Minister's Secretariat (international charge) in 2013. Since 2015, he has been the Deputy Director of the International Labor Organization (ILO) Headquarters and Sectoral Policy Bureau, and since 2021 he has been appointed as an International Counselor of the Ministry of Health, Labor and Welfare (a member of the Freedom of Association of ILO).

Director

Atsushi Nakayama

Joined the Ministry of Finance in 1981, Consulate-General of Japan in Rio de Janeiro, Ministry of Foreign Affairs in 1989, Director of Investigation Department 1, Tokyo National Tax Bureau in 1999, Director of Special Coordination Division, Land Planning Bureau, Ministry of Land, Infrastructure, Transport and Tourism in 2003, Director of General Affairs Department of Tokyo Customs in 2006, Tokai in 2013 Director of Finance Bureau, 2015 Specially Appointed Professor, Faculty of Economics, Aichi Gakuin University 2021 Auditor of ORIX Bank

Director

Naoto Kawamura

After graduating from the Faculty of Law, Hosei University, he joined a human resources-related business company through Nippon Ham Co., Ltd. In 1998, after working as the sales manager of Pasona Softbank, he was the representative director of a joint venture company of Pasona and NTT. In 2014, he was listed on the TSE Mothers of Interworks. Founded Shin Lifework Co., Ltd. in 2019. Serves as an outside director of Sportsfield Co., Ltd.

Director

Nobuhide Tanaka

In 2010, he worked for Hattori Masaaki Law Office (partner since 2015). 2016 Indonesia's largest law firm Assegaf Hamzah & Partners, JETRO legal expert, Surabaya consulate legal counsel, Aichi prefecture support desk management, belonging to Proact law firm (partner), third party committee, in-house investigation, Perform pre-IPO support work.

Director

Lee Cholji

2008 Graduated from the Faculty of Law, University of Tokyo 2010 Graduated from the Department of Practical Legal Profession, Graduate School of Law, Nagoya University 2012 Joined Ichigaya General Law Office and became a partner of Ichigaya General Law Office in 2019

Director

Junji Suzuki

After graduating from Nihon University College of Science and Technology, worked for APA Group and joined a foreign technical intern training supervision organization in 2004. Entered the board of directors (currently the representative director). Established Global E Support Co., Ltd. in 2019. Currently, he is an advisor to two supervising organizations and a foreign human resources council.

Director

Manabu Iwasaki

1987 Dentsu International Information Services, 2004-2006 Senior Vice President and Executive Officer of Livedoor Co., Ltd., and President and Representative Director of Livedoor Business Solutions Co., Ltd. Since then, he has been the president's office manager of DENA Co., Ltd., a director of DENA China, and has been the representative director of Smart Technologies & Resources Co., Ltd. since 2008.

Advisor

Jun Arima

Graduated from the Faculty of Economics at the University of Tokyo in 1982, and joined the Ministry of International Trade and Industry (currently Ministry of Economy, Trade and Industry) in the same year. He is the Deputy Director General of the Minister's Secretariat in charge of global environmental issues. From 2011 to 2015, he was the director of the Japan External Trade Organization (JETRO) London office and a special researcher on global environmental issues. Since April 2021, he has been a specially appointed professor at the University of Tokyo Graduate School of Public Policy.

Advisor

Manabu Hatakeyama

Joined the Ministry of Justice in 1976. 1989 General Manager of Consulate General of Japan in New York, Ministry of Foreign Affairs. Since 2007, he has been the Chief of Security Division, Immigration Bureau, Ministry of Justice. 2008 Director of Osaka Immigration Bureau, Ministry of Justice. 2011 Director of Tokyo Regional Immigration Services Bureau, Ministry of Justice. 2015 Director of Japan International Training Cooperation Organization Nagoya Office. He is currently a full-time advisor to Nakai Immigration Services, an advisor to the International Exchange Cooperative Association, and an advisor to Gowell Co., Ltd.

Advisor

Ichiro Hao

Joined the Ministry of Transport (currently the Ministry of Land, Infrastructure, Transport and Tourism) in 1983. First Secretary of the Embassy of Japan in Spain, Secretary of the Minister of Transport, Deputy Director General of the Minister's Secretariat of the Ministry of Economy, Trade and Industry (Commercial and Distribution), Deputy Director General of the Minister's Secretariat of the Ministry of Land, Infrastructure, Transport and Tourism (Railway / Comprehensive Policy), Deputy Director of Logistics of the Ministry, Maritime Affairs of the Ministry Serves as the director and the secretary general of the Cabinet Office General Ocean Policy Promotion.

Advisor

Masamichi Saigo

Joined the Ministry of Agriculture, Forestry and Fisheries in 1980. He was mainly in charge of agriculture, forestry and fisheries-related technical and environmental measures in each department of the ministry, and also worked at the Environment Agency, the Embassy of Japan in India, and the Secretariat of the Food Safety Commission of the Cabinet Office. In 2015, he was the Secretary General of the Agriculture, Forestry and Fisheries Technology Council and the Deputy Director General of Technology. 2018 Ambassador to Nepal. 2021 Technical Advisor of Dai Nihon Nōkai



Looking for
regular members



JLEF homepage

- We are delivering the latest information such as news and columns.
- For seminar information and membership application, go to the JLEF homepage.

JLEF Symbiotic Mutual Aid Society

Membership fee is free.
You can browse members-only articles and web-seminars.

check

